

Medical Therapies Limited

Annual General Meeting
17 November 2009

Maria Halasz
Chief Executive Officer

MTY (ASX)

Snapshot 17 November 2009

- Shares on issue 212M
- Options on issue 23M
- Market capitalisation \$6.2M
- No debt

Board

- ◉ David King (Chairman)
- ◉ Robin Beaumont (Non-executive Director)
- ◉ Koichiro Koike (Non-executive Director)
- ◉ Maria Halasz (CEO and MD)

Achievements 2009

- ⦿ Settlement of midkine IP agreement
- ⦿ Transfer of midkine technology and assets
- ⦿ Retiring of final installment of \$2.5M debt
- ⦿ Major patents granted (restenosis, autoimmune treatment)
- ⦿ Extending board skills: appointment of Robin Beaumont
- ⦿ Production of first batch of antibodies for our diagnostic product development
- ⦿ Appointment of Darren Jones
- ⦿ Kumamoto University collaboration agreement
- ⦿ Celera lung cancer license
- ⦿ Yamasa distribution deal

MTY's midkine portfolio is targeting...

...the diagnosis and treatment of cancer and inflammatory diseases by:

- Detecting cancer at an early stage
- Monitoring efficacy of cancer treatments
- Developing drugs to reduce cancer growth and spread
- Developing treatments for autoimmune diseases such as rheumatoid arthritis and multiple sclerosis

MTY Assets

- ◉ Intellectual property
 - Over 100 patents around midkine, a novel therapeutic and diagnostic target
- ◉ Inventory
 - 7g midkine (retail value of \$500K per gram, total over \$3M)
 - 200mg of antibody stock (sold @\$40K per mg, total over \$800K)
- ◉ Large portfolio of products under development
 - Range of cancer diagnostic products (licensed lung cancer to Celera)
 - Antibody therapy for MS, RA, restenosis
 - Midkine protein therapy for heart attack, stroke

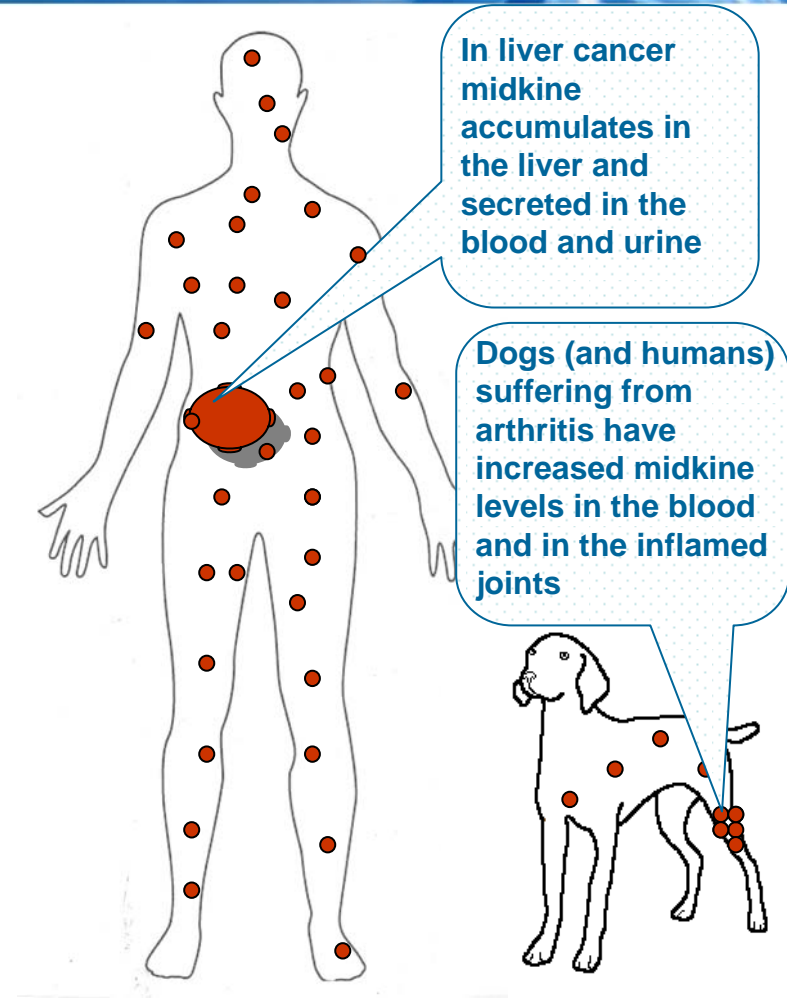
Midkine in the embryo

- ◎ Midkine is an important embryonic growth factor (small protein)
- ◎ Acts by:
 - protecting cells
 - facilitating cell migration
 - modulating angiogenesis
 - promoting cell growth



Midkine in adults

- Not detectable in healthy adults
- Only appears as part of certain diseases:
 - Promotes cancer formation and growth
 - Promotes inflammatory and autoimmune conditions such as arthritis and multiple sclerosis
 - Facilitates cancer growth and metastasis
 - Facilitates plaque formation after heart/vascular surgery
- Midkine concentrations increase in the blood, urine and in the specific area of cancer or inflammation
- Midkine is strongly preserved amongst the species and has human and veterinary applications



Strategy for 2010 and beyond

◎ Prioritised products:

- Category 1 products will be funded from equity raised
- Category 2 products will be partnered with no upfront cash commitment from MTY
- Category 3 products will be funded subject to funding availability from revenues

Category 1 Diagnostic Portfolio

Sub-division	Strategy	Year complete
Lung cancer	License	2009
Antibodies	Research distribution (Yamasa)	2009
Midkine ELISA	Optimise for clinical validation	2010
Point of Care midkine test	Complete development	2011
Dog cancer diagnostic	Validate/license	2011
Gastric cancer diagnostic	Validate/license	2012
Colorectal cancer diagnostic	Validate/license	2012

Category 1 Therapeutic Antibodies

Sub-division	Strategy	Year complete
Multiple Sclerosis	Preclinical validation/license	2012
Rheumatoid Arthritis	Preclinical validation/license	2012
Restenosis*	Preclinical validation/license	2013

*Subject to third party funding

Summary

- MTY has the largest patent portfolio globally around midkine, a novel diagnostic and therapeutic target
- Midkine can be used to diagnose cancer early and can be targeted for the treatment of cancer and inflammatory conditions as well as cosmetic applications
- Midkine cosmeceuticals, immunoassay, veterinary diagnostic and early cancer diagnostic products are close to market
- Creating value by:
 - Develop diagnostic assets in-house – early revenue
 - Developing therapeutic assets through partnerships towards early licensing – license fees, milestones and royalties

Thank you

Maria Halasz

Chief Executive Officer

E: halasz@mtty.com.au

T: +61 2 9299 0311

www.mtty.com.au